

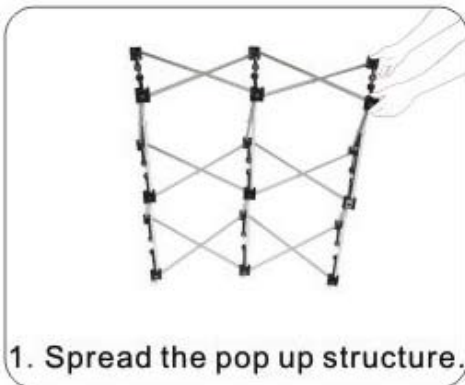
# INSTRUCTIONS FOR Pop-Up Promotional Table



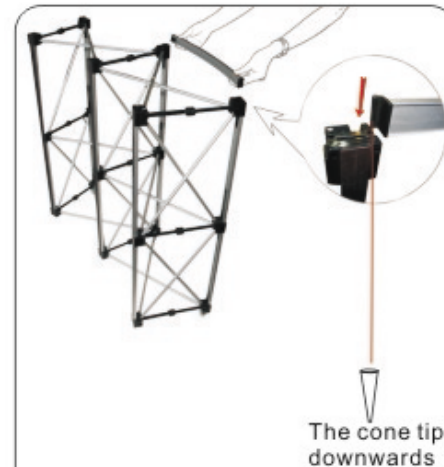
4. Assemble all the straight bars on the the red mark position as the picture.



7. Put the table board on the structure.



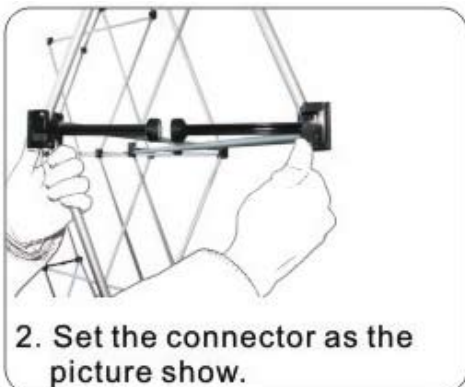
1. Spread the pop up structure.



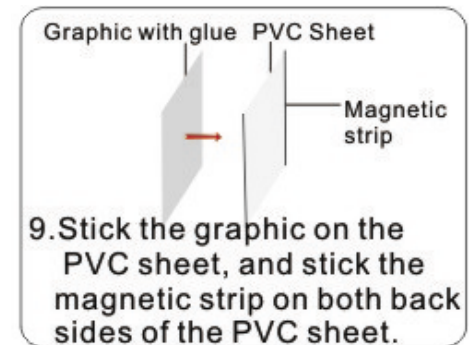
5. Assemble all the straight bars on the red mark position as the picture.



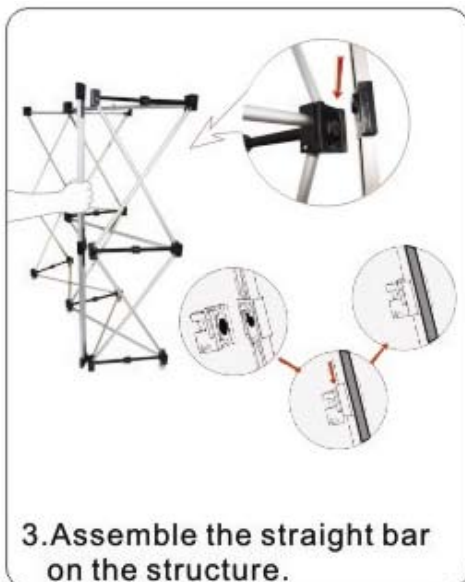
8. Put the shelf board on the structure.



2. Set the connector as the picture show.



9. Stick the graphic on the PVC sheet, and stick the magnetic strip on both back sides of the PVC sheet.



3. Assemble the straight bar on the structure.



6. Assemble the lateral level bar on the structure.



10. Stick the finished graphic on the structure.



11. Stick all the graphics on the structure.